

AURA CONSULTING, 1 KING WILLIAM STREET, LONDON EC4N 7AF



LOOKBOOK

+44(0)203 178 6048



AURA-CONSULTING.CO.UK

1

WSP

Aura Consulting completed a comprehensive project for WSP's UK headquarters located at 70 Chancery Lane, London.

The building, leased since 2008, underwent a full CAT B refurbishment, including CAT A mechanical infrastructure replacement, to enhance environmental performance and functionality.

With 58,000 sqft. of office space and utility areas in the basement, the headquarters accommodates 1,300 employees. WSP's adoption of agile working practices, where desks are shared and booked via a system, aligns with their commitment to efficient operations.





2

ALANTRA

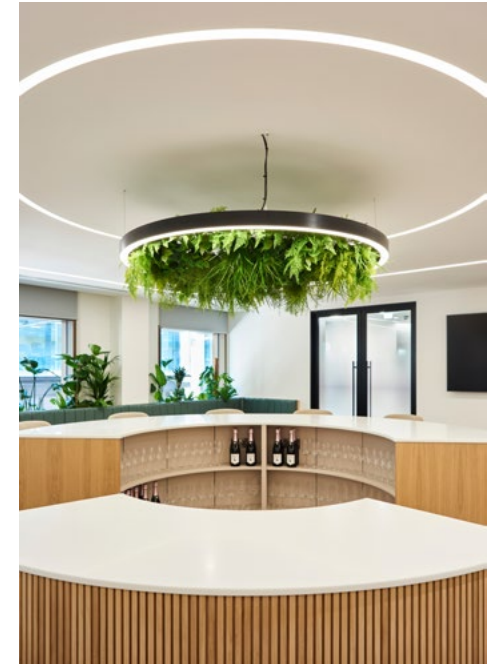
Investment Banking headquarters, 20,000 sqft

Aura were appointed by Alantra in 2022 to manage the build of their new London HQ and support the relocation of two separate business entities into their new global home.

The exciting scheme features a high-end meeting room suite overlooking St Paul's Cathedral.

The high quality scheme was delivered on time and within the budget expectations

- The circular design of the office space creates movement and collaborative flow between the workstations, meeting rooms, wellness space and breakout hub!



ALANTRA

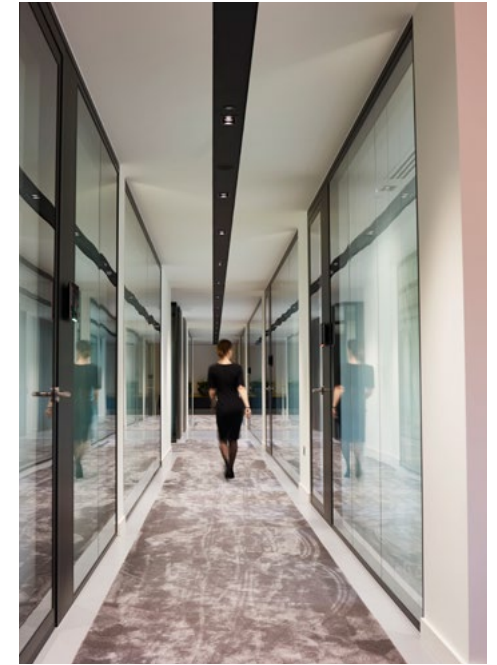


AURA-CONSULTING.CO.UK

3

HOULIHAN LOKEY LONDON OFFICE

This project is the 43,000sqft fit-out of 1 Curzon Street for their newly formed European Headquarters. The relocation of circa 400 staff was from their previous 2 offices in Shaftesbury Avenue and Pall Mall, London.





4

HOULIHAN LOKEY PARIS OFFICE

Aura were appointed to implement the new Paris HQ by merging two existing offices into a newly refurbished Cat A and Cat B specification, using references from the global schemes recently delivered. This project was the highest budget psf globally.

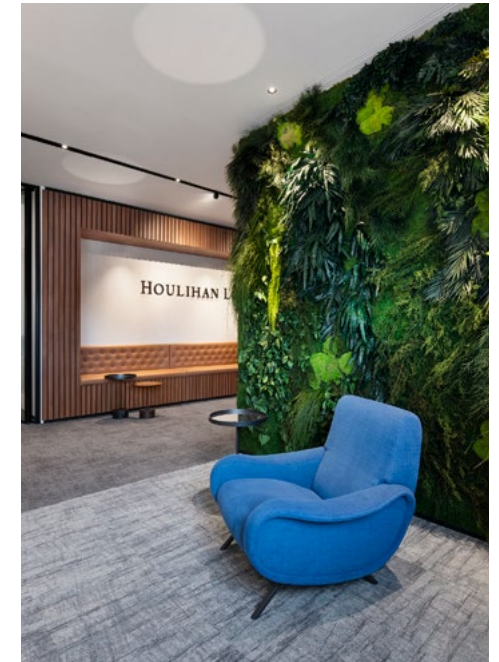
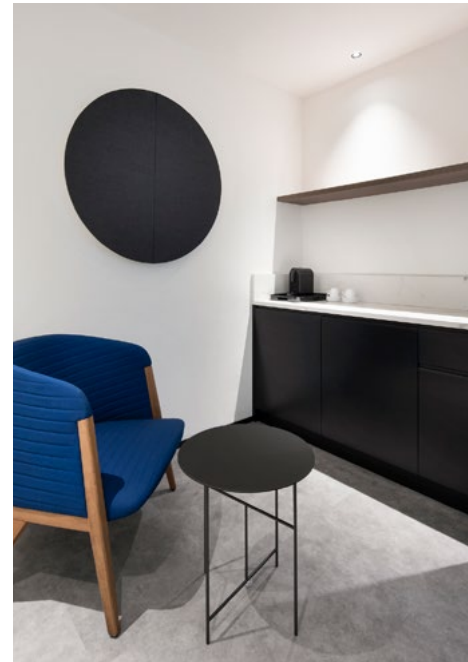




5

HOULIHAN LOKEY MILAN OFFICE

Following the success of the London and Amsterdam schemes, Houlihan Lokey offered our team the opportunity to deliver their new 15,000sqft Italian HQ. These offices were required to accommodate a growing team in Italy.





6

HOULIHAN LOKEY AMSTERDAM OFFICE

Houlihan Lokey took a new lease in their existing building, relocating from 1st & 2nd Floors to Basement, Ground & 1st Floors. Houlihan Lokey relocated into temporary office accommodation whilst the refurbishment was being carried out.

Total size: 6,000 sqft approx.

Total cost: €802,000.00



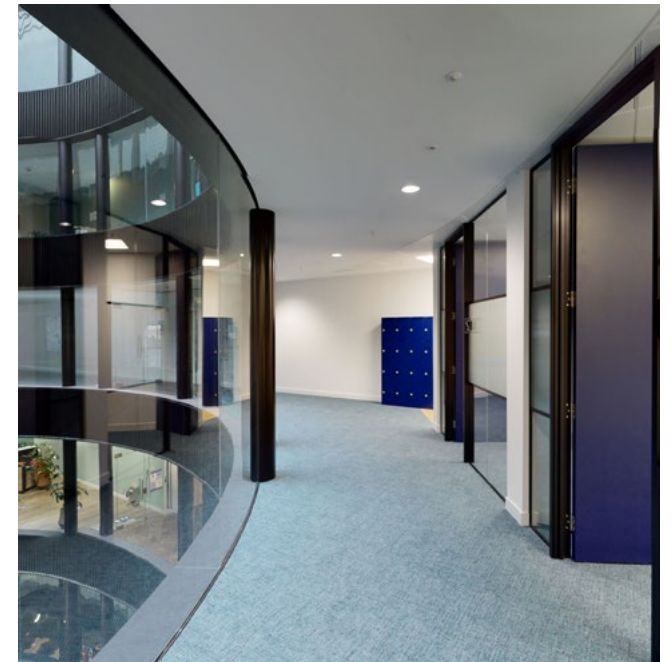


7

TRUSTPILOT LONDON OFFICE

Trustpilot needed to move their existing two London offices into a newly built UK corporate headquarters and found The Minster Building where we delivered a striking 20,000sqft fit-out.

[VIEW VIDEO](#)

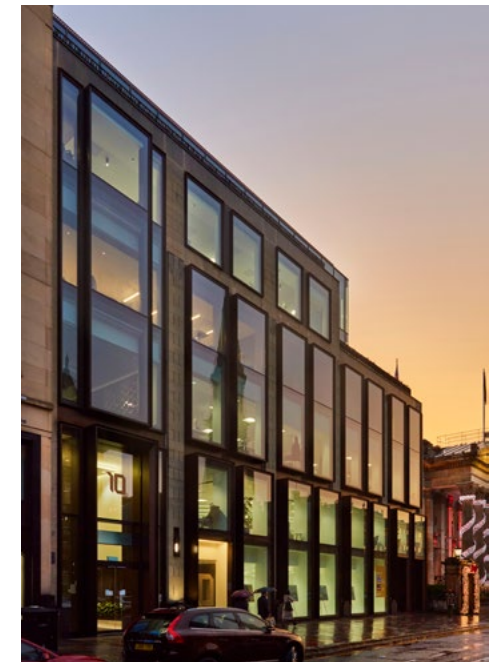




8

TRUSTPILOT EDINBURGH OFFICE

Following the success of the London scheme, Trustpilot offered our team the opportunity to deliver their new 10,000sqft Scottish HQ. This office was set up to be a tech centre of excellence in order to fully utilise the skillset in the local workforce.

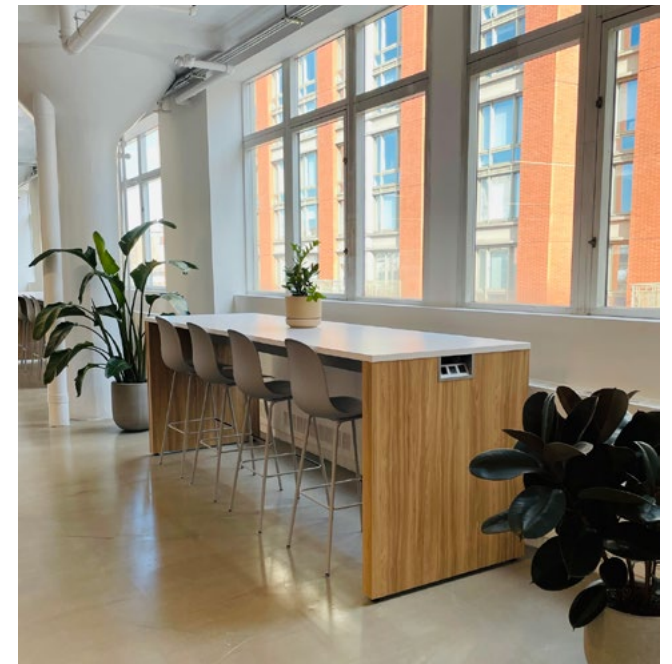




9

TRUSTPILOT NEW YORK OFFICE

Following on from the success in London and Edinburgh Trustpilot offered our team the opportunity to deliver their new 30,000sqft USA HQ. This office was delivered in order to relocate a delayed scheme to exit a serviced lease in the city.

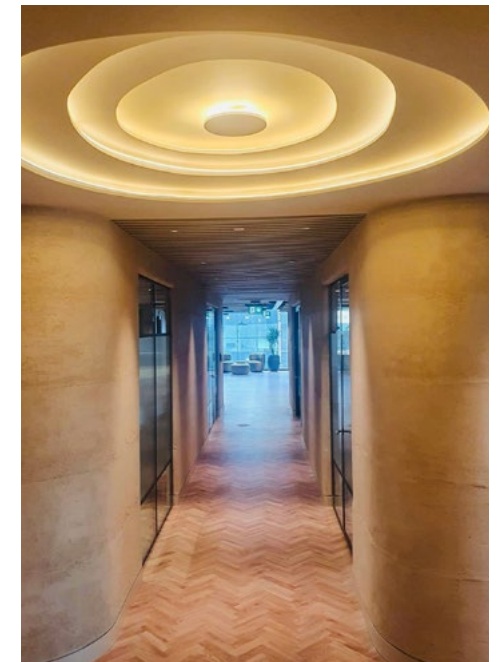




10

FIDELIS DUBLIN

Aura were appointed to deliver a new 15,000sqft Ireland HQ based in Dublin.
Our local team delivered this scheme based on the previously delivered UK schemes.



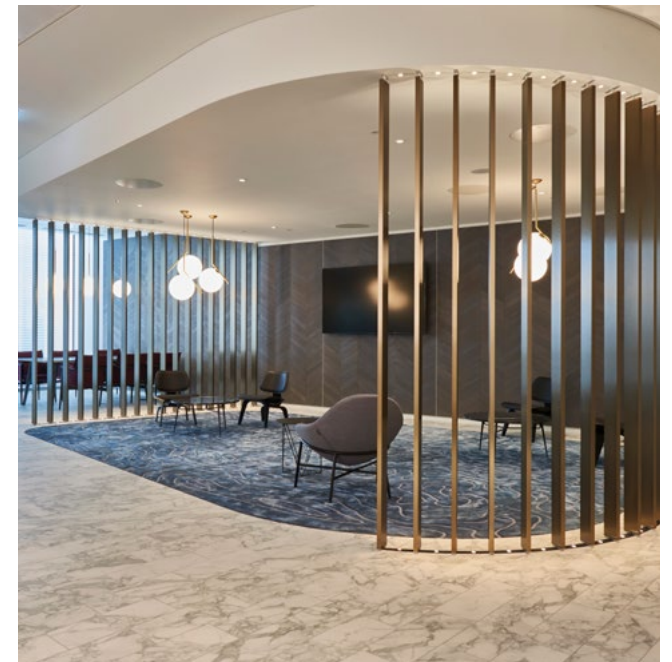


11

AXA INVESTMENT MANAGERS

Aura have worked with AXA for 10 years and were appointed to deliver their new 63,000sqft corporate HQ in the UK. Their chosen location was their own real estate investment project at 22 Bishopsgate, the newest and most advanced smart building in the UK. The building has industry leading commitments that focus on wellbeing, learning, equality and environmental sustainability.

[VIEW VIDEO](#)





12

SAMSUNG

100,000sqft UK HQ fit-out in Surrey

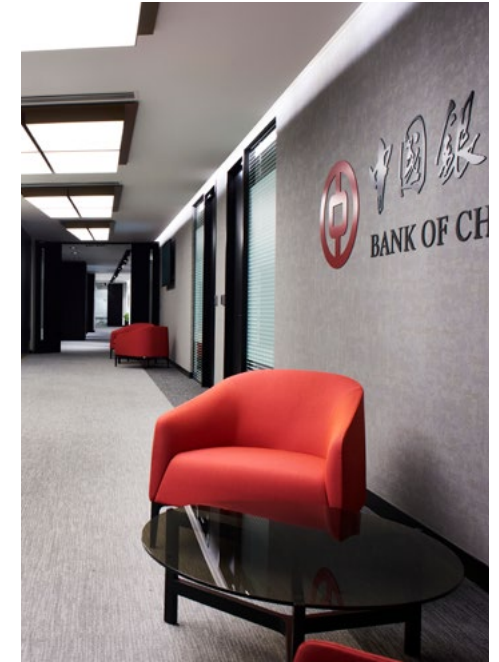




13

BANK OF CHINA LONDON TRAINING CENTRE

The Bank of China launched their new European Training Centre at 60 Gresham Street in Q4 2019. The project was to build a newly fitted out 8,000sqft facility aimed specifically at training their own staff in the western economy and banking sectors. The facility includes classrooms, high end AV, and many client lounge areas for breakout.





14

YMU GROUP

Relocation of three offices into one 20,000 sq ft location and a newly acquired floor.

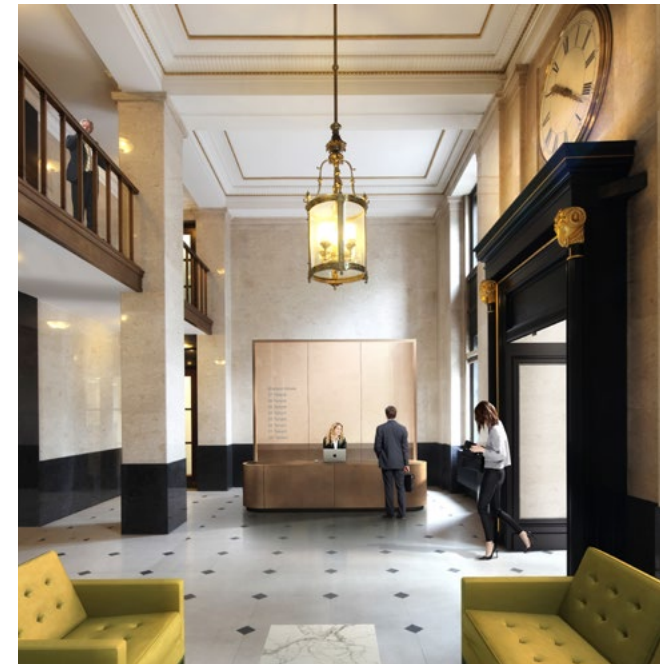
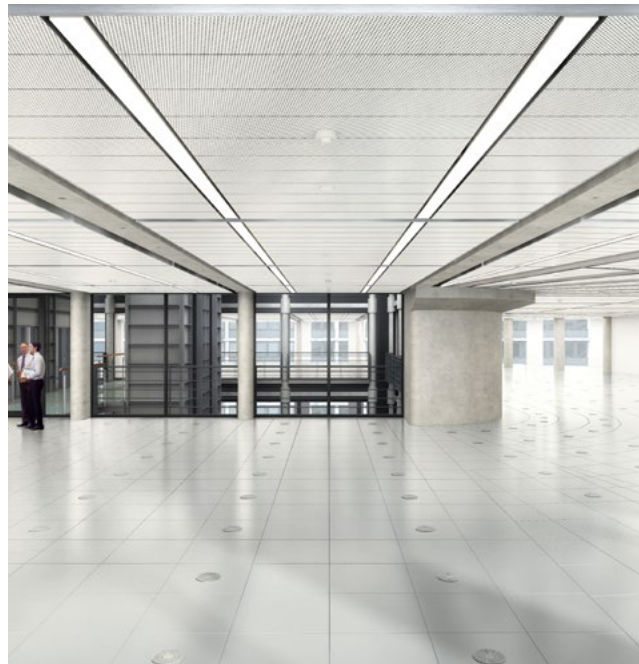
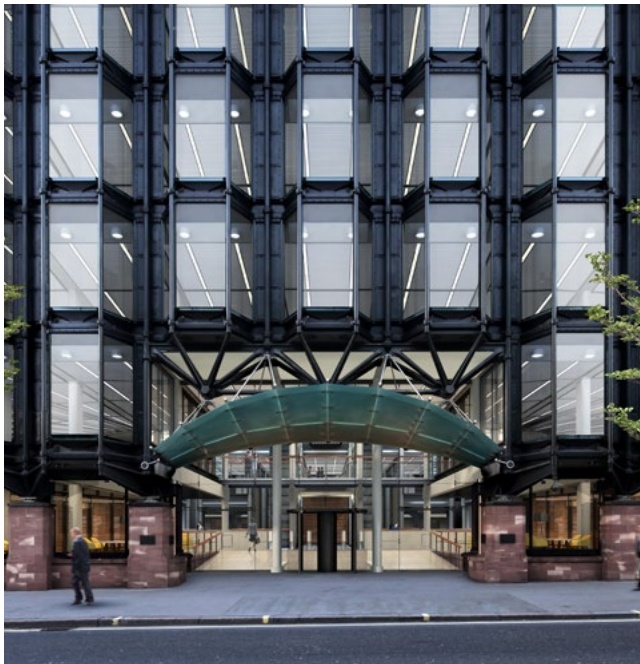




15

FINANCIAL TIMES

Corporate Relocation of 1,600 staff from One Southwark Bridge to New Bracken House as part of a £50m investment in the future to build the business over the next 25 years. The project includes £10m of direct works to be delivered over 2 year period.





16

JAMES GRANT GROUP

Relocation of three offices into one 20,000 sq ft location and a newly acquired floor.

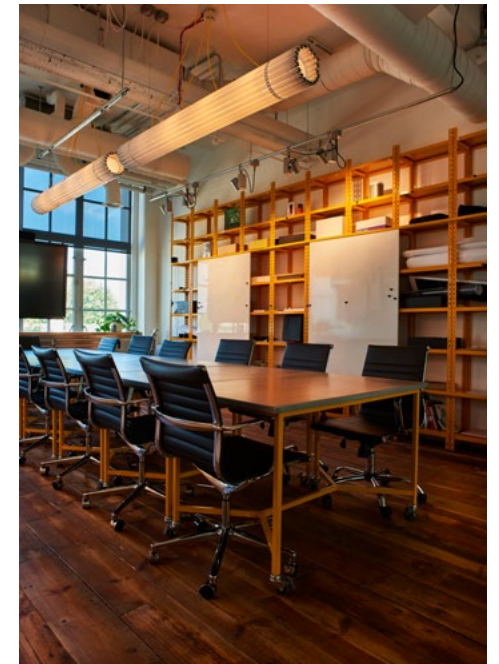




17

WUNDERMAN OFFICE

Corporate HQ Fit-Out at Great London House in 30,000 sqft over three phases and to a budget of £2m.



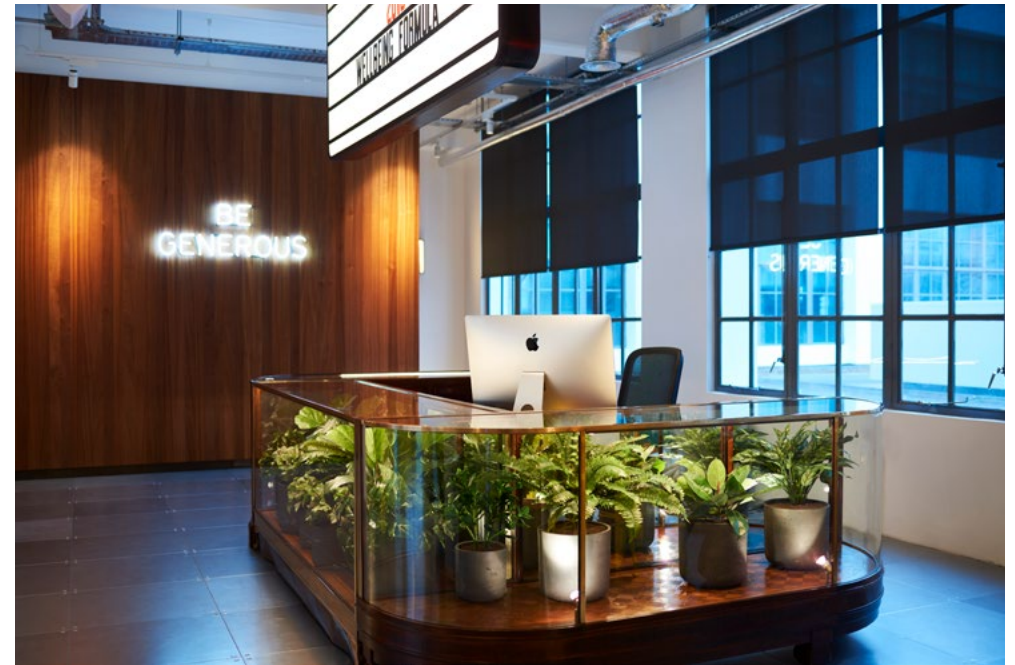


18

WUNDERMAN BRIDGE PROJECT

Main area consists of Main reception /Breakout/Café and Town Hall area including the installation of a co-ordinated three projector/three screen presentation Audio Visual system and a nine screen tessellated video wall. A new board room meeting room with its own integral café/bar. Refurbishments and expansion of the existing male and female toilets, including disabled toilets and the construction of a storage/cloaks area and a preparation room. New air conditioning, ventilation, plumbing, drainage, electrical and data installations were also provided.

Interior design By jackdaw Studio. M&E concept design by GLP Main Contractor BSG Limited





19

REIGNWOOD

8,500sqft high quality corporate fit-out of 55 Mark Lane in one of their previous owned buildings, with a relocation from More London.

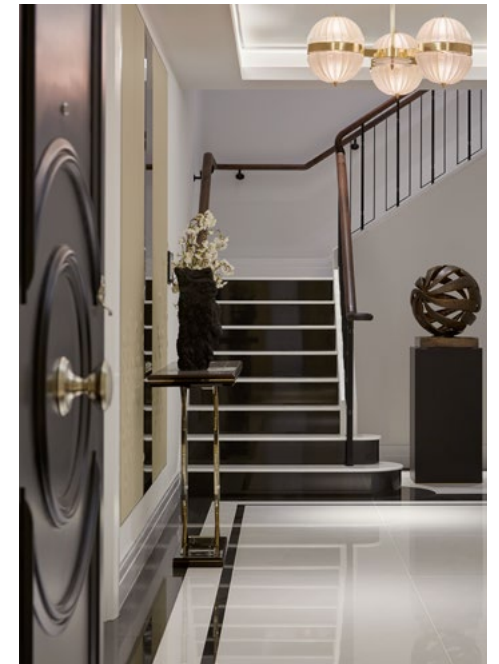




20

REIGNWOOD TEN TRINITY SQUARE

Fit-Out and furnishing of 40 serviced apartments to a superior high end budget and specification.





21

BANK OF CHINA GLASGOW

6,000sqft private wealth and corporate banking facility for Scotland and their customers with global reach throughout the UK. Project Budget was in the region of £1m.

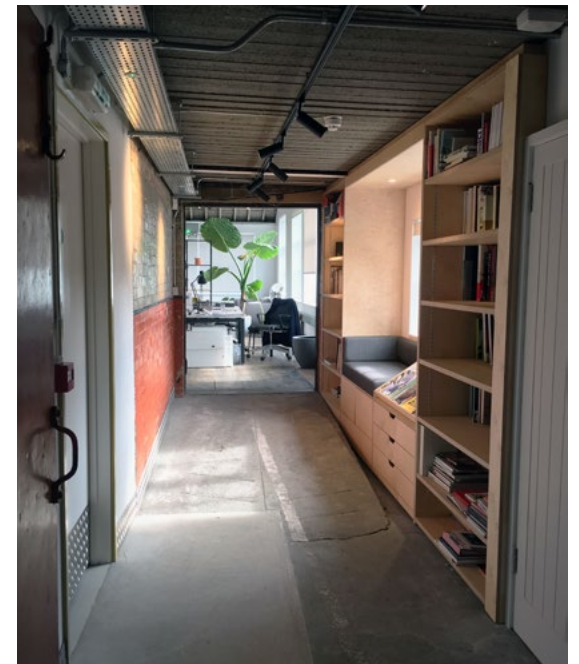




23

FORPEOPLE

13,000sqft newly acquired warehouse conversion and relocation from several locations into a newly fitted-out headquarters. The company's first permanent office to represent their brand and accommodate their teams in one location. £600,000 budget.

[VIEW VIDEO](#)





+44(0)203 178 6048

AURA CONSULTING, 1 KING WILLIAM STREET, LONDON EC4N 7AF

AURA-CONSULTING.CO.UK